

# 2012

# Automated Garbage Collection Calendar

for individual roll-out carts

**2012 Collection Routes have changed. Please review carefully.**



**JANUARY 2012**

| S  | M  | T  | W  | T  | F  | S  |
|----|----|----|----|----|----|----|
| 1  | 2  | 3  | 4  | 5  | 6  | 7  |
| 8  | 9  | 10 | 11 | 12 | 13 | 14 |
| 15 | 16 | 17 | 18 | 19 | 20 | 21 |
| 22 | 23 | 24 | 25 | 26 | 27 | 28 |
| 29 | 30 | 31 |    |    |    |    |

**FEBRUARY 2012**

| S  | M  | T  | W  | T  | F  | S  |
|----|----|----|----|----|----|----|
|    |    |    | 1  | 2  | 3  | 4  |
| 5  | 6  | 7  | 8  | 9  | 10 | 11 |
| 12 | 13 | 14 | 15 | 16 | 17 | 18 |
| 19 | 20 | 21 | 22 | 23 | 24 | 25 |
| 26 | 27 | 28 | 29 |    |    |    |

**MARCH 2012**

| S  | M  | T  | W  | T  | F  | S  |
|----|----|----|----|----|----|----|
|    |    |    |    | 1  | 2  | 3  |
| 4  | 5  | 6  | 7  | 8  | 9  | 10 |
| 11 | 12 | 13 | 14 | 15 | 16 | 17 |
| 18 | 19 | 20 | 21 | 22 | 23 | 24 |
| 25 | 26 | 27 | 28 | 29 | 30 | 31 |

**APRIL 2012**

| S  | M  | T  | W  | T  | F  | S  |
|----|----|----|----|----|----|----|
| 1  | 2  | 3  | 4  | 5  | 6  | 7  |
| 8  | 9  | 10 | 11 | 12 | 13 | 14 |
| 15 | 16 | 17 | 18 | 19 | 20 | 21 |
| 22 | 23 | 24 | 25 | 26 | 27 | 28 |
| 29 | 30 |    |    |    |    |    |

## KEY

**HOUSEHOLD HAZARDOUS WASTE DAYS**  
For information visit [www.saskatoon.ca](http://www.saskatoon.ca) and search under "H" for Household Hazardous Waste Collection Days.

- ROUTE NO. 1** • Erindale • Evergreen • Fairhaven • Montgomery Place • University Heights Suburban Centre • Willowgrove
- ROUTE NO. 2** • Arbour Creek • Forest Grove • Parkridge • Silverspring
- ROUTE NO. 3** • Briarwood • College Park • Massey Place • Pacific Heights • Sutherland
- ROUTE NO. 4** • College Park East • Confederation Park • Lakeridge • Lakeview • Rosewood
- ROUTE NO. 5** • Airport Industrial • Eastview • Hampton Village • Stonebridge • Westview • Wildwood
- ROUTE NO. 6** • Adelaide/Churchill • Brevoort Park • Dundonald • Greystone • Holliston • Nutana Park
- ROUTE NO. 7** • Lawson Heights • Lawson Heights Suburban Centre • North Park • Richmond Heights • River Heights • Silverwood
- ROUTE NO. 8** • Grosvenor Park • Haultain • King George • Meadowgreen • Pleasant Hill • Queen Elizabeth • Riversdale • Varsity View
- ROUTE NO. 9** • Buena Vista • Caswell Hill • City Park • Exhibition • Kelsey – Woodlawn • Mayfair • The Willows
- ROUTE NO. 10** • Avalon • Holiday Park • Hudson Bay Park • Mount Royal • Nutana • Westmount

**MAY 2012**

| S  | M  | T  | W  | T  | F  | S  |
|----|----|----|----|----|----|----|
|    |    | 1  | 2  | 3  | 4  | 5  |
| 6  | 7  | 8  | 9  | 10 | 11 | 12 |
| 13 | 14 | 15 | 16 | 17 | 18 | 19 |
| 20 | 21 | 22 | 23 | 24 | 25 | 26 |
| 27 | 28 | 29 | 30 | 31 |    |    |

**JUNE 2012**

| S  | M  | T  | W  | T  | F  | S  |
|----|----|----|----|----|----|----|
|    |    |    |    |    | 1  | 2  |
| 3  | 4  | 5  | 6  | 7  | 8  | 9  |
| 10 | 11 | 12 | 13 | 14 | 15 | 16 |
| 17 | 18 | 19 | 20 | 21 | 22 | 23 |
| 24 | 25 | 26 | 27 | 28 | 29 | 30 |

**JULY 2012**

| S  | M  | T  | W  | T  | F  | S  |
|----|----|----|----|----|----|----|
| 1  | 2  | 3  | 4  | 5  | 6  | 7  |
| 8  | 9  | 10 | 11 | 12 | 13 | 14 |
| 15 | 16 | 17 | 18 | 19 | 20 | 21 |
| 22 | 23 | 24 | 25 | 26 | 27 | 28 |
| 29 | 30 | 31 |    |    |    |    |

**AUGUST 2012**

| S  | M  | T  | W  | T  | F  | S  |
|----|----|----|----|----|----|----|
|    |    |    | 1  | 2  | 3  | 4  |
| 5  | 6  | 7  | 8  | 9  | 10 | 11 |
| 12 | 13 | 14 | 15 | 16 | 17 | 18 |
| 19 | 20 | 21 | 22 | 23 | 24 | 25 |
| 26 | 27 | 28 | 29 | 30 | 31 |    |

**SEPTEMBER 2012**

| S  | M  | T  | W  | T  | F  | S  |
|----|----|----|----|----|----|----|
|    |    |    |    |    |    | 1  |
| 2  | 3  | 4  | 5  | 6  | 7  | 8  |
| 9  | 10 | 11 | 12 | 13 | 14 | 15 |
| 16 | 17 | 18 | 19 | 20 | 21 | 22 |
| 23 | 24 | 25 | 26 | 27 | 28 | 29 |
| 30 |    |    |    |    |    |    |

**OCTOBER 2012**

| S  | M  | T  | W  | T  | F  | S  |
|----|----|----|----|----|----|----|
|    | 1  | 2  | 3  | 4  | 5  | 6  |
| 7  | 8  | 9  | 10 | 11 | 12 | 13 |
| 14 | 15 | 16 | 17 | 18 | 19 | 20 |
| 21 | 22 | 23 | 24 | 25 | 26 | 27 |
| 28 | 29 | 30 | 31 |    |    |    |

**NOVEMBER 2012**

| S  | M  | T  | W  | T  | F  | S  |
|----|----|----|----|----|----|----|
|    |    |    |    | 1  | 2  | 3  |
| 4  | 5  | 6  | 7  | 8  | 9  | 10 |
| 11 | 12 | 13 | 14 | 15 | 16 | 17 |
| 18 | 19 | 20 | 21 | 22 | 23 | 24 |
| 25 | 26 | 27 | 28 | 29 | 30 |    |

**DECEMBER 2012**

| S  | M  | T  | W  | T  | F  | S  |
|----|----|----|----|----|----|----|
|    |    |    |    |    |    | 1  |
| 2  | 3  | 4  | 5  | 6  | 7  | 8  |
| 9  | 10 | 11 | 12 | 13 | 14 | 15 |
| 16 | 17 | 18 | 19 | 20 | 21 | 22 |
| 23 | 24 | 25 | 26 | 27 | 28 | 29 |
| 30 | 31 |    |    |    |    |    |

## INSTRUCTIONS

1. This calendar is for neighbourhoods with individual roll-out carts.
2. Find your neighbourhood in the list and match it to a coloured collection route.
3. Match your coloured route in the calendar for your scheduled collection days.

**Thanks for keeping our city so beautiful!**

Recycling diverts tonnes of waste from the Landfill every year. To find out more about recycling options, visit [www.saskatoon.ca](http://www.saskatoon.ca) and search under "R" for Recycling. For the latest updates, follow the City on our blog, Facebook, or Twitter. These links are available on the City's main website.

Smartphone users can scan the Quick Response (QR) code below to access information on waste collection, Saskatoon Regional Waste Management Centre (landfill), recycling, leaf and yard waste, and household hazardous waste.



This calendar has been printed on 100% recycled paper. Please recycle your old garbage calendar.

# 2012 Automated Garbage Collection Calendar for individual roll-out carts

### Frequently Asked Questions

#### How do I use my garbage cart?

- **Lid on cart MUST be completely closed to guarantee collection.**
- Please bag all materials placed in the cart.
- **Your cart must be out by 7:00 a.m.** on your collection day to ensure service. Remember to remove the cart from the street within 24 hours.
- Carts with inappropriate materials, or not set out properly, could be bypassed by automated collection trucks.
- Cart problems associated with normal wear and tear will be repaired by the City. However, cart neglect or abuse will not be tolerated and is subject to penalties as per the Waste Bylaw.
- **IMPORTANT!** Excess refuse, whether bagged or unbagged, left beside the carts will NOT be picked up by drivers of automated collection trucks and may be subject to penalties as per the Waste Bylaw.



#### What can't I put in my cart?

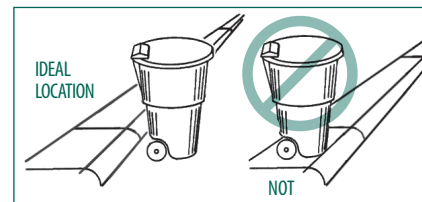
- unbagged grass/leaves
- unbagged household waste
- unbagged animal waste or parts
- improperly packaged sharp objects (please place in puncture-proof containers)
- rugs or carpet rolls
- construction/demolition materials
- liquids of any type
- automotive parts
- dirt/sod
- concrete/rocks
- furniture/appliances
- non-approved commercial waste
- any rigid material over 60 cm (2') in length
- tree branches over 60 cm (2') in length (please bundle branches together)
- unflattened cardboard, or exceeding 60 cm in any dimension

Please call the Waste Stream Management Customer Service Line at 975-2486 to find out how to safely dispose of these items.

The City may decide not to pick up a cart that includes these materials. Persons may be subject to fines up to \$200.

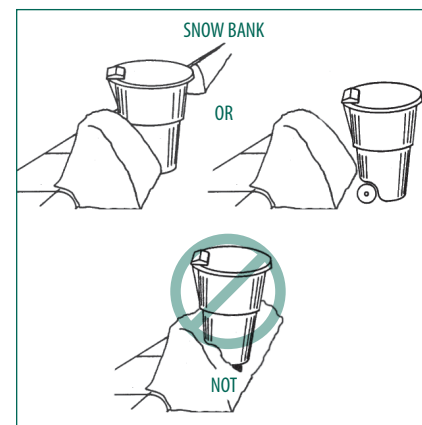
#### Front Street Individual Cart Collection:

The cart must be placed with the wheels facing the curb. **Don't place the cart on the sidewalk.**

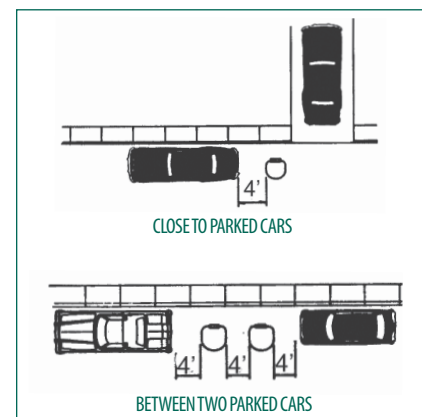


If there are snow banks along the curb, the cart can be placed out from the curb a little further.

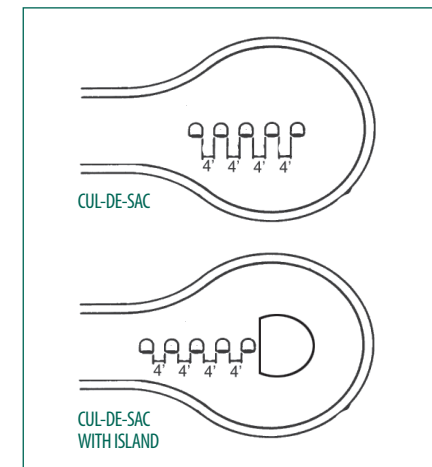
**Don't place the cart on a snowbank.**



The cart should be no closer than four feet (1.2 metres) from any obstacle or parked car to allow the garbage collection truck enough space to collect.



If you live in a cul-de-sac, always arrange the carts from the centre of the circle towards the main street. **The carts must all face the same direction** and be spaced a minimum of four feet (1.2 metres) apart.



#### Rear Lane Individual Cart Collection:

##### How do I place the cart in the lane?

The cart must be placed on the edge of the lane, away from the driving track, with the wheels facing the back fence. The cart should not block any garage, gate or pathway, and should be four feet (1.2 metres) from any obstacle such as a tree or a power box.



The cart should also be as level as possible. Do not place the cart on ridges, snow banks or uneven ground.

#### Why are there changes to collection during winter months?

Households tend to generate less garbage when the weather turns cold. To ensure efficient use of tax dollars, garbage is collected every other week starting in November. During the Christmas season, collection temporarily resumes weekly pick-up. These changes are noted on your garbage collection calendar.

#### What happens when collections are missed?

If extreme weather occurs or if trucks experience mechanical failures, the City may have a difficult time meeting the collection schedule. Should this happen, simply leave your garbage cart out until it is collected.

#### How can I reduce the amount of garbage I throw away?

##### Tips for your household:

- Compost your household organics and your leaves and grass – buy a backyard composter for your home, sign up for the City's Leaves & Grass Subscription Program (collected bi-weekly throughout the summer), or drop off leaves and grass at the City's two compost depots. The compost depots also accept non-Elm tree branches cut to lengths less than 24 inches. All Elm, or wood that cannot be distinguished from Elm, must be taken by residents to the landfill for proper disposal.
- Collect and drop off your tin cans, newspapers, cardboard, milk and beverage containers at one of the City's six Recycling Depots. Make sure the recyclables are clean and do not put plastic bags in the recycling bins.
- Christmas Tree Recycling – drop off your tree at a designated drop off area from Boxing Day to January 31.

For more ideas, visit [www.saskatoon.ca](http://www.saskatoon.ca) and search under "R" for recycling. There are many recycling and reuse opportunities in Saskatoon for everything from computers and cell phones to paint and appliances.

#### If my individual roll-out cart is full, can I use my neighbour's or arrange for additional carts?

Individual roll-out carts are for the exclusive use of assigned households only. The roll-out cart and its contents are the property of the City of Saskatoon. Tampering with the cart or its contents constitutes an offence under the Waste Bylaw. Additional carts can be contracted by calling 975-2486.

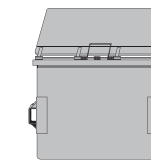
#### Can I take my excess material to the Landfill?

Yes. The Saskatoon Landfill is located on Dundonald Avenue, south of 11th Street. Call 975-2496 for hours of operation or 975-2486 for other questions. For more information on the landfill, search under 'L' for landfill general information on the City's website at [www.saskatoon.ca](http://www.saskatoon.ca)

#### What about safety?

For your children's safety, do not allow them to play near garbage trucks or garbage carts and please be aware of what you throw away. City personnel come in contact with these materials.

### Communal Containers



COMMUNAL METAL BIN

**Communal metal bins** - These bins are privately owned and maintained, and often serve apartment buildings or other multi-unit residential complexes. The collection schedule for these bins is set up by the association or manager(s) for the property.



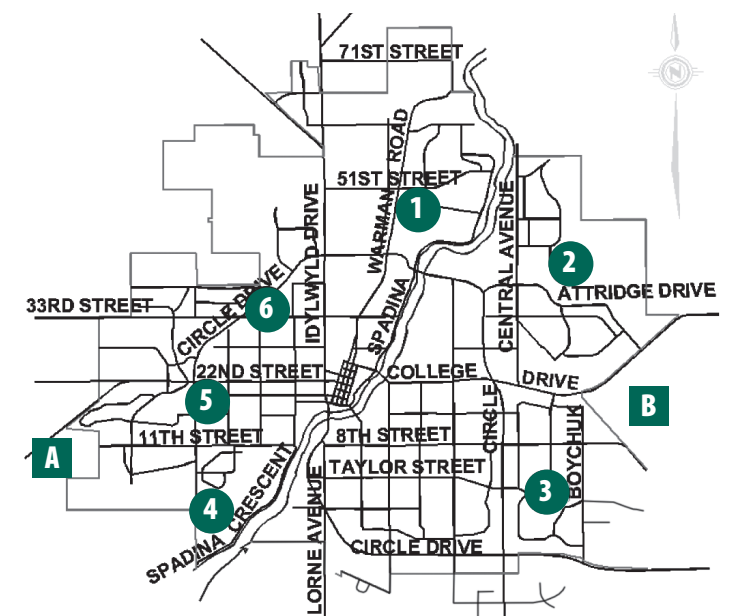
COMMUNAL 300 GALLON CONTAINER

**Communal 300 gallon black containers** - These containers look very similar to the individual roll-out carts except they are much bigger. They are provided to commercial accounts that are serviced by the City of Saskatoon.



INDIVIDUAL ROLL-OUT CART (see detailed collection calendar)

### Recycling and Compost Depot Locations



- 1 Primrose Drive Recycling Depot (beside Civic Centre)
  - 2 Lowe Road Recycling Centre - Lowe Road (behind Fire Hall #9)
  - 3 Lakewood Civic Centre - 1635 McKercher Dr.
  - 4 Saskatoon Landfill - Dundonald Ave. - Recycling Area
  - 5 Meadowgreen Recycle Centre - Corner of 22nd St. and Witney Ave
  - 6 Edmonton Avenue & Avenue P - behind the 33rd Street Co-op
- A** Highway 7 and 11th Street Compost Depot (seasonal)  
**B** McOrmond Drive Compost Depot (seasonal)

For additional information about your collection schedule, collection cart, appropriate materials, recycling information or recycling bin locations, call 975-2486 during normal business hours or visit the City's website at: [www.saskatoon.ca](http://www.saskatoon.ca). Search under 'G' for garbage calendars in the alphabetical listings.